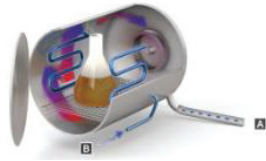


## Factory fitted options

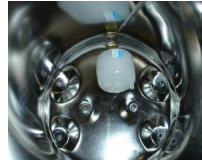
**THESE OPTIONS NEED TO BE ORDERED TOGETHER WITH THE AUTOCLAVE.**



Fast Cooling with coils inside the chamber (soft tap-water, drain and compressed air needed (counter pressure))



Super Fast Cooling: only combined with fast cooling! Ventilator unit for circulation in chamber



Bio-Hazard filter system (481-0543) for contaminated waste sterilization. Filter cartridge inside the chamber (easy to replace)



Vacuum system: PV (481-0591)



Integrated Steam generator



Vacuum system (481-0592)

### Factory Fitted Options for Tuttnauer Front loading Laboratory sterilizers (horizontal)

Model(s)	Essential					Hi End				
	2840EL-D	3850EL-D	3870EL-D	5050EL-D	5075EL-D	2840ELC-G-D	3850ELC-G-D	3870ELC-G-D	5050ELC-G-D	5075ELC-G-D
Fast Cooling	Not available	481-0770		481-0772		Standard available				
Super Fast cooling	Not available	481-0770 + 481-0549		481-0772 + 481-0550		Not available	481-0549		481-0550	
Vacuum system	481-0591*	481-0592**				481-0591*	481-0592**			
Bio -Hazard Filter	481-0543					481-0543				
Replacement Cartridge 481-0543	481-0869 (55mm)	481-0870 (105mm)				481-0869 (55mm)	481-0870 (105mm)			
Automatic Water Filling & Draining	481-0860					481-0860	Standard available			
Auxiliary Dry Contacts	481-0865	481-0866				481-0865	481-0866			
Independent Analog Recording	481-0853	481-0854				481-0853	481-0854			
Additional Flex. PT100 for ext. use	481-0862					481-0862				
Additional Pressure for ext. use	481-0861					481-0861				

\* Membrane vacuumpump | \*\* Water ring vacuumpump

### Factory Fitted Options for Tuttnauer Top loading Laboratory sterilizers (vertical)

Model(s)	Essential					Hi End			
	2840ELV-D	3850ELV-D	3870ELV-D	5050ELV-D	5075ELV-D	3850ELVC-G-D	3870ELVC-G-D	5050ELVC-G-D	5075ELVC-G-D
Fast Cooling	481-0769	481-0771		481-0773		Standard available			
Super Fast cooling	Not available	481-0549		481-0550		481-0549		481-0550	
Vacuum system	481-0871**	481-0592**				481-0592**			
Bio -Hazard Filter	Not available	481-0543				481-0543			
Replacement Cartridge 481-0543	Not available	481-0855				481-0855			
Automatic Water Filling & Draining	Standard available					Standard available			
Auxiliary Dry Contacts	481-0866					481-0866			
Independent Analog Recording	481-0854					481-0854			
Additional Flex. PT100 for ext. use	481-0862					481-0862			
Additional Pressure for ext. use	481-0861					481-0861			

### Factory Fitted Options for Tuttnauer Top loading stand alone sterilizers (vertical)

	Essential Free standing			
	2840ELV-WR-D	3850ELV-WR-D	3870ELV-WR-D	5075ELV-WR-D
Fast Cooling	Not available			
Super Fast cooling	Not available			
Vacuum system	Not available			
Bio -Hazard Filter	Not available	481-0543		
Replacement Cartridge 481-0543	Not available	481-0855		
Automatic Water Filling & Draining	Not available			
Auxiliary Dry Contacts	481-0866			
Independent Analog Recording	481-0854			
Additional Flex. PT100 for ext. use	481-0862			
Additional Pressure for ext. use	481-0861			

## General Options

### General Options for Tuttnauer Front loading Laboratory sterilizers (horizontal)

Model(s)	Essential					Hi End				
	2840EL-D	3850EL-D	3870EL-D	5050EL-D	5075EL-D	2840ELC-G-D	3850ELC-G-D	3870ELC-G-D	5050ELC-G-D	5075ELC-G-D
"External" Compressor for counter pressure	Not available	481-2088				481-2085	481-2088			
DEMI-water cartridge for use with Auto fill	481-0858			481-0857		481-0857				
Conductivity meter for DEMI-water system	Incl. with 481-0858			481-0859		481-0859				
Replacement cartridge for 481-0858	481-0867			-		-				
Switchbox 380V to 230V	N/a	481-0856 (21A)		481-0856 (31A)		N/a	481-0856 (40A)			
Convertor 10kVA 3-phase 230V <-> 400VAC	N/a	481-0868				N/a	481-0868			
Wheels set of 4	N/a					N/a	Standard available			
Draining to Condensate Collection vessel	DIP-001					Not available				

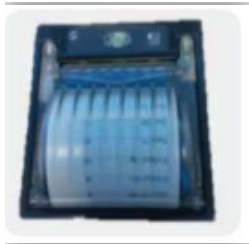
### General Options for Tuttnauer Top loading Laboratory sterilizers (vertical)

Model(s)	Essential					Hi End			
	2840ELV-D	3850ELV-D	3870ELV-D	5050ELV-D	5075ELV-D	3850ELVC-G-D	3870ELVC-G-D	5050ELVC-G-D	5075ELVC-G-D
"External" Compressor for counter pressure	481-2085	481-2088				481-2088			
DEMI-water cartridge for use with Auto fill	481-0857					481-0857			
Conductivity meter for DEMI-water system	481-0859					481-0859			
Switchbox 380V to 230V	N/a	481-0856 (27A)				481-0856 (40A)			
POWER SUPPLY MPD-45 ( 12VDC/5VDC )	N/a	ELE035-0157				ELE035-0157			
Wheels set of 4	481-0852					481-0852			
Switchbox 380V to 230V	481-2083					Not available			

### General options for Tuttnauer Top Loading Free standalone sterilizers (vertical)

Model(s)	Essential			
	2840ELV-WR-D	3850ELV-WR-D	3870ELV-WR-D	5075ELV-WR-D
"External" Compressor for counter pressure	Not available			
DEMI-water cartridge for use with Auto fill	Not available			
Conductivity meter for DEMI-water system	Not available			
Switchbox 380V to 230V	N/a	481-0856 (27A)		481-0856 (40A)
Convertor 10kVA 3-phase 230V <-> 400VAC	N/a	481-0868		
Wheels set of 4	Standard available			
Switchbox 380V to 230V	N/a			

## Documentation options



Printer (481-0850)



The advantages of R.P.C.R Reporting



Brochure R.P.C.R Remote PC Report

### Documentation Options for Tuttnauer Front loading Laboratory sterilizers (horizontal)

Model(s)	Essential					Hi End				
	2840EL-D	3850EL-D	3870EL-D	5050EL-D	5075EL-D	2840ELC-G-D	3850ELC-G-D	3870ELC-G-D	5050ELC-G-D	5075ELC-G-D
Printer (Built-In)			481-0850						481-0850	
CFR21 Part 11 Compliance			481-0863						481-0863	
R.P.C.R Reporting software			481-0679						481-0679	
IQ/OQ- Preliminary documentation			481-0864						481-0864	
Printer paper (Thermal)			481-0851						481-0851	
Auxiliary Dry Contacts	481-0865		481-0866			481-0865			481-0866	
Independent Analog Recording	481-0853		481-0854			481-0853			481-0854	
Additional Flex. PT100 for ext. use			481-0862						481-0862	

### Documentation Options for Tuttnauer Top loading Laboratory sterilizers (vertical)

Model(s)	Essential					Hi End			
	2840ELV-D	3850ELV-D	3870ELV-D	5050ELV-D	5075ELV-D	3850ELVC-G-D	3870ELVC-G-D	5050ELVC-G-D	5075ELVC-G-D
Printer (Built-In)			481-0850						481-0850
CFR21 Part 11 Compliance			481-0863						481-0863
R.P.C.R Reporting software			481-0679						481-0679
IQ/OQ- Preliminary documentation			481-0864						481-0864
Printer paper (Thermal)			481-0851						481-0851
Auxiliary Dry Contacts			481-0866						481-0866
Independent Analog Recording			481-0854						481-0854
Additional Flex. PT100 for ext. use			481-0862						481-0862

### Documentation Options for Tuttnauer Top loading Stand-Alone Laboratory sterilizers (vertical)

	3850ELV-WR-D	3870ELV-WR-D	5075ELV-WR-D
	Printer (Built-In)		481-0850
CFR21 Part 11 Compliance		481-0863	
R.P.C.R Reporting software		481-0679	
IQ/OQ- Preliminary documentation		481-0864	
Printer paper (Thermal)		481-0851	
Auxiliary Dry Contacts		481-0866	
Independent Analog Recording		481-0854	
Additional Flex. PT100 for ext. use		481-0862	